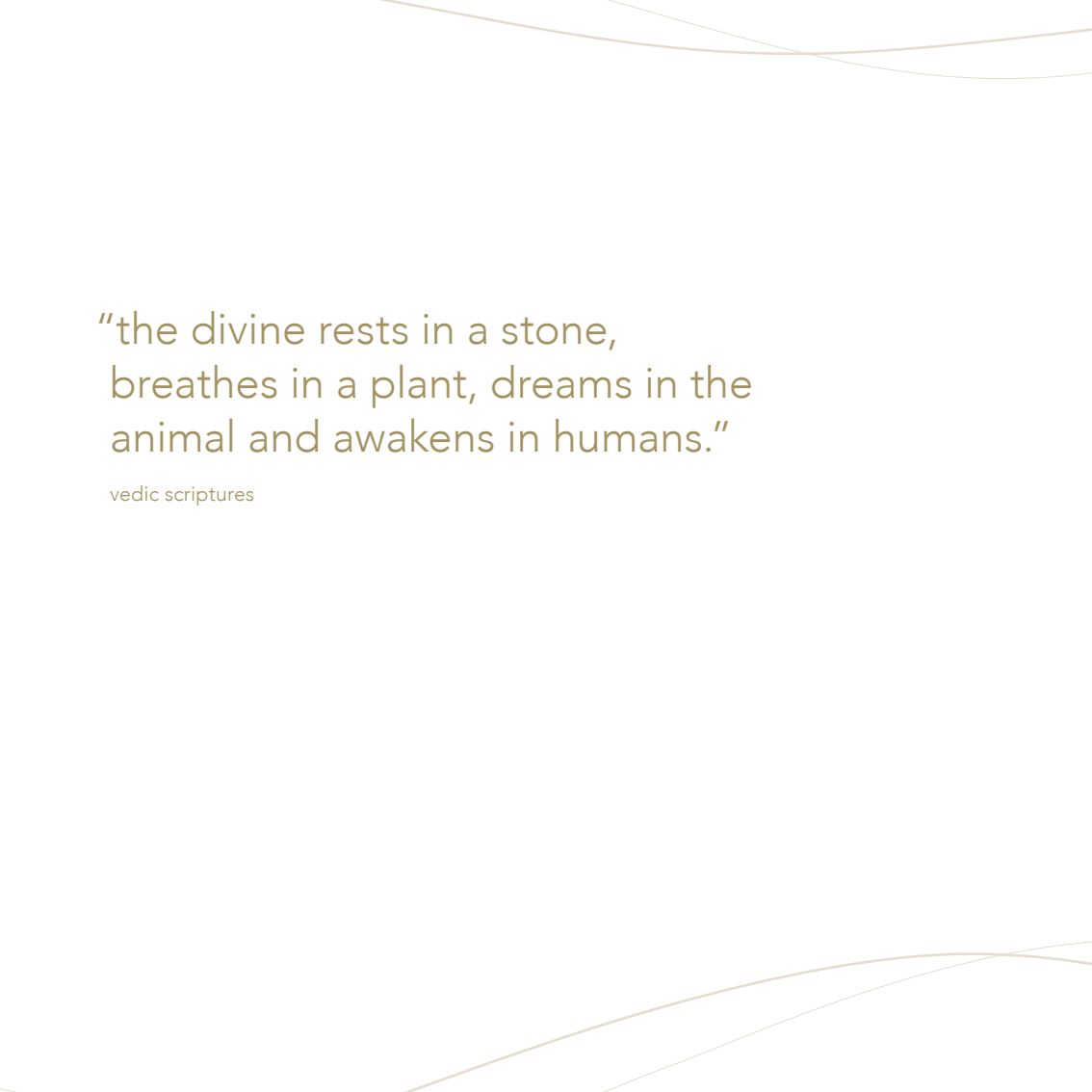



sisir

honor yourself



“the divine rests in a stone,
breathes in a plant, dreams in the
animal and awakens in humans.”

vedic scriptures



JULISIS is redefining skin care for the 21st century. we are a transformative, high frequency and energetic skincare system - radically breaking with industry standards. with **JULISIS** there is no need to peel, scrub, use acids or any synthetic chemicals. our bodies absorb every substance applied and we want to keep our clients healthy and their skin in optimal functionality.

JULISIS bio-botanicals are of the highest potency available hand harvested plants, mostly grown in an over 100 years old high elevation medicinal plant garden in northern italy - far from industry and

pollution. we use ancient old recipes and combine it with the latest production processes - following strict european pharmaceutical guidelines.

our unique alchemistic formulas support your natural biorhythm using flower essences and botanical stem cells combined with liquid gold, silver, and precious stone essences. we use a special bio fermentation process to create highly efficient probiotics that are alive. all our formulas help rebalance your skin to its optimal, natural equilibrium (comparable to the versatility of an aspirin), with no allergic reactions ever reported.

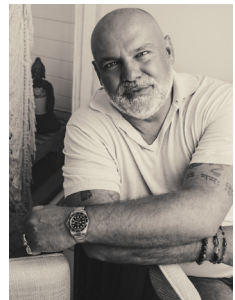
to radiate and shine with a glow,
your internal and external body should
be in perfect health and harmony.

the most important aspect in a vibrant,
glowing skin is a functional ph barrier:
it all starts with our mild and thorough
washes to strengthen your ph.

all **JULISIS** preparations should be
used very sparingly - to not overfeed,
but stimulate skins' own vital functions.
following our prescribed rituals will lead
to a major visible improvement. thank you
for your trust! let your skin breathe and
your heart shine...

julius eulberg
founder

*with much
love julius*





with a lot of care the seeds are sown, cultivated, and harvested by hand and gently dried on silk panels stretched over wooden frames. In this way, the splendid “external” signatures of the medicinal plants - as an indication of their “inner” nature - are preserved.

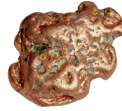


jlge [JULISIS liquid gold essence®] is the purest activated form of gold, aligned with the sun element. it enlightens the mind, and has a harmonizing and energizing effect. as a trace element gold is produced by your body itself, supporting the regulation of hormone production. ayurvedic teachings state that the precious metal fortifies the heart and nervous system, promoting stamina and willpower. gold helps strengthen the cell walls. the result: healthy, supple skin and a radiant appearance.



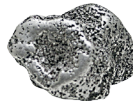
jlse [JULISIS liquid silver essence®] stimulates the parasympathetic nervous system and has a calming and balancing effect. associated with the moon element, our liquid silver supports the night time detoxification process of your skin.

the regenerating and calming effect helps to refine your complexion and maintain elasticity. when used each evening, your skin will appear clearer, smoother and firmer.



jlce [JULISIS liquid copper essence®] – aligned with venus element „enlivens“ substances within the human organism. copper controls metabolism, has a purifying effect and supports regeneration.

the natural, collagen-forming mineral copper helps to preserve your skin's firm, youthful appearance.



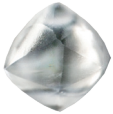
jlpe [JULISIS liquid platinum essence®] aligned with ketu moon, activates the intracellular oxygen system and stimulates your skin's own vital functions.

the energetic quality of platinum in the human energy field is extremely refined, supportive and strong. your skin will look much more refreshed, healthy and firmed.



liquid precious metals and healing stones → alchemistic transformation

jlwpe [JULISIS liquid white pearl essence®]– aligned with the moon – affects the energy centre of transformation. the essence activates and refines emotional consciousness and increases charisma. meanwhile, pearl essence’s extreme moisturising effect helps maintain the physiological balance of your skin.



from the hardest stone on earth, **jlde** [JULISIS liquid diamond essence®] – aligned with venus– is attributed the greatest healing power. diamond essence helps to unblock subtle energy streams in your body. according to ayurveda, diamond strengthens the immune system and acts as a powerful youth preserving ingredient. integrated into our preparations, diamond essence intensifies the effect of all other active ingredients.



jlqpe [JULISIS liquid quartz essence®]– one of clear quartz’s benefits is enhancing mental clarity. It can help with emotional stability, and it is popular in meditation and restorative work. It’s also often used for manifestation and can help create more focus and clarity around a desire. It is a protective stone and can be used to amplify psychic abilities.



jlre [JULISIS liquid ruby essence®] – aligned with the sun – has a stabilizing and stimulating effect.

the ayurvedic “sunstone” promotes joie de vivre, vitality, strength and dynamism. ruby helps your skin to de-sensitize and build a barrier against the elements.



healing quartz

Quartz is the second most abundant natural mineral found on Earth. quartz is composed of silicon and oxygen atoms with a chemical formula of SiO_2 .

Clear quartz has the capacity to absorb, store, release and regulate energy.

It resonates with all of the chakras. Quartz enhances spiritual growth, spirituality, awareness, and wisdom. It increases inspiration and creativity. It can also help with focus, studying, and retaining what one learns. Quartz is a stone of harmony and is helpful in romantic relationships.

- Quartz can balance and revitalize the physical, mental, emotional and spiritual levels.
- Cleanse and enhance the organs and subtle bodies.
- Quartz can be a catalyst, facilitating a deep soul cleansing, connecting the physical dimension with the mind.
- Stimulates the immune system and brings the body into balance.
- Harmonize the chakras and align the subtle bodies.

crystal quartz cleanser, 150ml

proper cleansing is the key for healthy, vibrant skin! our crystal quartz cleanser will prepare your skin for all JULISIS products, enhancing your skin's ability to absorb either our day or night systems.

JULISIS uses alchemistic essences made of precious metals, gemstones and biobotanically cultivated healing plants.

this mild and aromatic liquid foaming cleanser gently purifies skin from environmental pollution, make up, eye-make up and excessive sebum – without drying. a holistic combination of rockrose, white flower neroli, blue aloe and JULISIS liquid quartz crystal essence® harmonizes and balances your skin and senses. this genius wash maintains the ideal natural ph-balance of your skin and helps to prevent moisture loss.

use a small pea-size amount and foam in your hands. apply over your face and neck and rinse, splashing your face seven times with warm or hot water. this ritual helps to ensure maximum absorption of any following JULISIS skin care preparations.

cell nutrition for the most demanding skin. perfectly suited for post-surgical skin care.

external use only. allergy-tested.

nature. pure. 100%.

day or night, your skin
needs to start with
ph-balanced skin



ingredients: aqua [glacier water], buxus chinensis [gold jojoba oil], rosa canina [rose hip oil], viola herba [wild pansy], alchemilla vulgaris herba [lady's mantle], paeonia officina flos [crimson red peony], matricaria camomilla flos [camomille flowers], alcohol [bio grain alcohol], glycerine [herbal glycerine], natrii alginas [algae extract], rosa gallica [bulgarian rose], jilpe [JULISIS liquid platinum essence®]

uplifting gold

our patented liquid gold essence, jlge® is the purest form of gold and of high frequency nature - aligned with the sun. it enlightens the mind, and has a harmonising and energising effect. as a trace element that is produced by the body itself, gold supports the regulation of hormone production by the glands. ayurvedic teachings state that the precious metal fortifies the heart and nervous system, promoting stamina and willpower. the effect of gold can be further intensified when combined with other healing stones.

the strong healing power of jlge® stimulates active cell formation and helps to strengthen the cell walls. the balance between the internal and the external is restored. the result: healthy, supple skin, and a radiant appearance.

it is no surprise that this treasured substance is also used in cosmetic surgery: gold threads are placed below the skin to plump up sagging cheeks and wrinkles from within, and to tighten the skin. pure gold is very well received by the body. allergies to the substance are rare. a visible lifting can be achieved through daily usage.





let your heart shine



Julisis

gold emulsion
day
50ml 1.7oz

Julisis

gold elixer day
30ml 1oz

Julisis

gold neroli toner
day
150ml 5.1oz

day preparations with
activated gold (JULISIS
liquid gold essence®)

→ vitalizing, protecting
and energizing



gold neroli toner day, 150ml

infused with energizing essences gold neroli toner day refreshes, vitalizes and stimulates a radiant, healthy complexion. helps to activate the energy system of your skin and protects the perfect natural ph-balance. use whenever skin needs extra moisture or an aromatic boost. a must for frequent travellers.

ingredients: aqua [spring water], aloe barbadensis [aloe extract], sodium chloride [crystal salt of himalaya], glycerine [herbal glycerine], citrus aurantium amara [neroli/bitter orange flower extract], jige [JULISIS liquid gold essence®]

gold elixer day, 30ml

JULISIS liquid gold essence® is the purest form of liquid gold and helps to activate your skin's own energy system. this specific serum deeply moisturizes and protects your skin against the elements. the results are a healthy, toned complexion and a radiant appearance. apply this formulation daily in the morning immediately after cleansing all over moistened face and neck area [1–2 drops]. ideal start: sunday [morning].

ingredients: aqua [spring water], alcohol [bio grain alcohol], glycerine [herbal glycerine], natrii alginas [algae], jlge [JULISIS liquid gold essence®], acidum sorbicum [rowanberry oil], crataegus monogina [hawthorne], sanguisorba officinalis [great burnet], leonurus cardiaca [motherwort], melissa officinalis [lemon balm], hypericum perf. [st. johns wort], rosa gallica [provence rose], rosmarinus officinalis [rosemary], crocus sativus [saffron], citrus aurantium [bigarade orange], citrus reticulata [tangerine], pelargonium graveolens [geranium extract], jlre [JULISIS liquid ruby essence®]



gold emulsion day, 50ml

a bio active compound with natural enzymes from wildflower honey, propolis and queen bee jelly together with JULISIS liquid gold essence®, stimulates your skin's own vital functions and optimizes the sebum-moisture balance. your skin becomes more supple, toned and smooth. fine lines and wrinkles appear less visible. stabilizes sensitive and irritated skin and restores the physiological balance. gold emulsion day permeates instantly for all-day protection. for dry skin we suggest a second application. perfectly suited for men as an after shave moisturizer.

ingredients: mel [fermented wild flower honey], cera alba [bee's wax], pollen extract [bee pollen], propolis [extract from honey bee hives], hypericum perforatum [st. john's wort oil], royal jelly [extract for queens bee], aqua [spring water], abies balsamea [balsam fir extract], jlge [JULISIS liquid gold essence®]



regenerating silver

JULISIS liquid silver essence, jlse® stimulates the parasympathetic nervous system, and has a detoxifying, renewing and balancing effect. depending on the phase of the moon, it supports the intake and release of fluids, thus promoting the removal of harmful substances. furthermore, it purifies body tissue and regulates the rhythmic processes within the human organism. it also supports the metabolism and intracellular composition along with natural firming properties.

silver has been known for its antibacterial properties for centuries. JULISIS uses liquid silver in place of synthetic preservatives.

its regenerating and calming effect helps to refine the complexion and to maintain elasticity. when used each evening, JULISIS will leave your skin looking clearer, smoother and healthier.





purify your thoughts



night preparations with
activated silver (JULISIS
liquid silver essence®)

→ firming, detoxifying
and balancing



silver cistus toner night, 150ml

the alchemistic combination of selected medicinal plants (rockrose, aloe) with himalaya crystal salt and JULISIS liquid silver essence® balances and clears your complexion, supports the overnight biorhythmic detoxification process, and refines the surface of your skin through daily application. an instant relaxer.

ingredients: aqua [spring water], aloe barbadensis leaf extract [aloe extract], sodium chloride [crystal salt of himalaya], glycerine [herbal glycerine], parfum [nat. essential oils], cistus ladaniferus [rockrose/cistus extract], sodium phytate [natrium salt], linalool [nat. essential oil], jse [JULISIS liquid silver essence®]



silver elixir night, 30ml

cell regeneration mainly occurs during night time. this unique serum with JULISIS liquid silver essence® intensifies the biorhythmic detoxification process, relaxes and refines the appearance of your skin. ideal for hyperpigmentation and to help even out skin tone. it maintains the natural elasticity of your epidermis. apply this formulation daily in the evening immediately after cleansing all over moistened face and neck area [1–2 drops]. ideal start: monday [evening].

ingredients: aqua [spring water], alcohol [bio grain alcohol], glycerine [herbal glycerine], natrii alginas [algae], salvia off. [sage], equisetum arvense [field horsetail], alchemilla vulgaris [lady's mantle], lamium album [white dead nettle], viola tricolor [wild pansy], sorbic acid [rowanberry oil], jlse [JULISIS liquid silver essence®], argentum citricum [homeopath. silver], jasinum grandiflorum [florentine white jasmine], vanilla planifolia [vanilla orchid], foeniculum vulgare [florentine white fennel], jlwpe [JULISIS liquid white pearl essence®]



silver cream night, 50ml

this powerful alchemistic combination of selected medicinal plants [saffron, st. john's wort, field horsetail] with beeswax and JULISIS liquid silver essence® promotes skin's overnight renewal process. this soothing and rich preparation harmonizes and firms fatigued skin, minimizing the appearance of small wrinkles.

ingredients: aqua [spring water], olea europaea [olive oil], glycerine [herbal glycerine], cera flava [beeswax], natrii alginas [algae], alcohol [bio grain alcohol], calendula officinalis [marigold], anthyllis vulneraria [kidney vetch], rosa gallica [red rose of lancaster], hypericum perforatum [st. john's wort oil], crataegus monogyna [common hawthorn] alchemilla vulgaris [lady's mantle], lamium album [white nettle], viola tricolor [wild pansy], crocus sativus [saffron], equisetum arvense [field horsetail], jlse [JULISIS liquid silver essence®], pogostemon patchouli [patchouly], citrus paradisi macfad. [pink grapefruit extract], citrus aurantium amara [neroli/ bitter orange flower extract], boswellia carterii [frankincense]

eye gel concentrate, 15ml



This exquisite eye gel features a delicately silky texture that melts effortlessly into the skin upon application. Instantly absorbed, it delivers a refreshing surge of hydration that awakens the entire eye area, leaving it visibly smoother, firmer, and revitalized.

Formulated to comfort and decongest, it is especially beneficial for tired, swollen eyes. The cooling gel texture helps diminish the appearance of puffiness while restoring a sense of lightness and clarity to the delicate contour. By supporting natural cellular activity, the formula enhances the skin's resilience and elasticity over time. The sensitive eye area appears gently contoured, toned, and refined.

ingredients: aqua, alcohol [organic grain alcohol glycerin, sclerotium gum [fermented sclerotium mushroom], sodium levulinate [tomato leaf], sodium anisate, crocus sativus stigma extract [persian saffron], jlge® [JULISIS liquid gold essence], parfum (natural essential oils), matricaria recutita flower oil [german chamomile], baltic amber essence

intense eye treatment, 15ml



crafted as a multi-dimensional intensive formula, this treatment addresses the most common and persistent signs of aging around the eyes. it deeply nourishes and floods the skin with lasting hydration, helping to soften the appearance of fine lines and wrinkles while restoring suppleness and resilience. dark circles appear visibly diminished, puffiness looks refined, and the eye area regains a smoother, firmer, and more contoured appearance.

ingredients: aqua [levitated spring water], prunus amygdalus dulcis oil [marcona almond oil], glycerin, alcohol [organic grain alcohol], hydrogenated phosphatidylcholine [sunflower extract], chamomilla recutita flower extract [chamomile root], algin [blue algae], sucrose, sclerotium gum [fermented mushroom], 1,2-heptanediol, sodium levulinate, sodium anisate, citric acid, rosmarinus officinalis leaf extract, rosa gallica flower extract foeniculum vulgare fruit extract [sweet fennel], euphrasia, officinalis extract [eyebright herb], hypericum perforatum extract [st.john worth oil], verbena officinalis extract, jlge® [julisis liquid gold essence], parfum (natural essential oil), matricaria recutita Flower Oil [German Chamomile]

activated gemstone essences → highly efficient single preparations



eyemulsion, 20ml

the sensitive eye area needs intensive yet gentle care. this protective eye treatment, an alchemistic combination of botanical extracts [jojoba oil, rockrose, echinacea, a.o.] with the essence of white diamond, copper and iron was specifically developed to nourish the eye area in order to prevent premature aging, minimize fine lines and wrinkles, and soothe irritations. ideal for dark circles and puffy eyes. used sparingly day and night this rich and gently cooling eyedrop will emphasize the luminosity of your eyes.

ingredients: aqua [spring water], aloe barbadensis [aloe extract], glyceryl stearate se [herbal wax], simmondsia chinensis seed oil [jojoba oil], triticum vulgare germ oil [wheat germ oil], glycine soy oil [soy bean oil], ricinus communis seed oil [castor oil], cetearyl alcohol [herbal wax], glycerine [herbal glycerine], calendula officinalis flower oil [marigold], olea europaea fruit oil [olive oil], butyrospermum parki butter [shea butter nilotica], sodium hyaluronate [bio hyaluronic acid], parfum [nat. essential oils], xanthan gum [fermented corn], alcohol [bio grain alcohol], echinacea purpurea extract [echinacea], cistus ladaniferus [cistus extract], sodium phytate [natrium salt], lactic acid tocopherol [vitamine e], linaleol [nat. essential oil], jide [JULISIS liquid diamond essence®], jice [JULISIS liquid copper essence®], jlie [JULISIS liquid iron essence®]



eyelixir, 15ml

our formula contains the rarest most potent botanical seed oils to increase the luminosity of the fragile eye area. camu-camu, buriti, prickly pear and more are active anti-oxidants and have the finest molecular density available with immediate absorption leaving a velvety smooth feel without any residue. EYELIXIR helps to seal in moisture, firms and revitalizes this most sensitive area - raspberry seed oil has a natural spf protection. use very sparingly day and night. all ingredients are energetically charged with rock crystal.

ingredients: prickly pear oil cactus extract [opuntia basilaris p.], camu camu oil [myrciaria dubia], raspberry seed oil [rubus idaeus], borago oil [borago officinalis], rosehip oil [rosa canina], moriche oil [mauritia flexuosa], german chamomille [matricaria chamomilla], bergamot [citrus bergamia]

facial serum oil, 30ml

balancing and light facial oil composed with only the finest cold pressed biodynamic seed oils to support natural elasticity and store nourishing moisture - vital steps to help prevent premature skin aging. white diamond essence intensifies all ingredients in their efficiency. absorbs easily and does not leave oily residue. ideal to mix with gold emulsion day should your skin require extra support, for example a changing season or changing skin care ritual. use sparingly, one or two drops on moist skin.

ingredients: prunus dulcis [sweet almond oil], simmondsia chinensis seed oil [gold jojoba seed oil], prunus armeniaca kernel oil [apricot kernel oil], macadamia ternifolia seed oil [macadamia seed oil], vitis vinifera seed oil [grape seed oil], persea gratissima [avocado oil], argania spinosa oil [argan oil], sclerocarya birrea [marula oil], alcohol [bio grain alcohol], tocopheryl acetate [vitamine e], caprylic glycerides [herbal emollient], ascorbyl palmitate [vitamine c], citric acid [lime extract], ascorbyl acetate [vitamine c], citrus clementina peel oil [white satsuma clementine], jld [JULIUS liquid diamond essence®]



contour hydra serum, 30ml

this age transcending serum awakens vitality one drop at a time, flooding skin with the most precious botanicals, like tibetan blue lotus, and the healing energies of our proprietary oil blend – high in vitamin c, a and e – are designed to penetrate rapidly, revitalizing deep within skin's surface. chilean rose hip oil extract – a powerful antioxidant– protects against the elements, allowing skin to thrive, cells plump and lines are visibly softened as natural repair is energized. skin becomes visibly radiant, youthful. full of vibrant life. to use: apply one drop onto fingertips and gently sweep over face and neck in the evening after using silver wash night on moist skin. for optimal results, follow with silver cream night.

ingredients: simmondsia chinensis seed oil [gold jojoba oil], vitis vinifera seed oil [albarossa grape seed oil], rosa canina fruit oil [rosehip oil], cannabis sativa seed oil [virgin hemp seed oil], retinyl palmitate [vitamin a], helianthus annuus seed oil [sunflower seed oil], tocopherol [vitamin e], nelumbium speciosum flower extract [tibetan blue lotus extract], rosmarinus officinalis leaf oil [greek rosemary oil]



silver mineral mask, 50ml



highly effective mask mineral booster with JULISIS liquid silver essence® detoxifies and refreshes fatigued skin. this unique mineral and enzyme formula refines the appearance of pores and promotes a healthy, clear complexion. it helps to neutralize free radicals and prevents premature aging. use after cleansing with silver wash, apply generously. please remove residue after 20 minutes. perfect for pre-party preparations.

ingredients: aqua [spring water], aloe barbadensis [aloe extract], sesamum indicum seed oil [sesam oil], prunus amygdalus dulcis oil [sweet almond oil], glyceryl stearate se [herbal wax], cocos nucifera oil [coconut oil], cetearyl alcohol [plant wax], parfum [nat. essential oils], oenothera biennis oil [evening primrose oil], squalane [olive], olea europaea fruit oil [olive oil], silica [mineral], equisetum arvense extract [field horsetail], achillea millefolium extract [yarrow], zinc oxide [mineral], butyrospermum parki butter [shea butter nilotica], glycerine [herbal glycerine], sodium chloride [crystal salt of himalaya], xanthan gum [fermented corn], sodium phytate [natrium salt], tocopherol [vitamine e], jlse [JULISIS liquid silver essence®], limonene/citronellol/linalool/geraniol/citral [nat. essential oils]

rose pearl hydra mask, 50ml



for those with chronically dry, distressed skin types, JULISIS' rose pearl hydra mask floods cells with precious moisture to restore skin's youthful plumpness, bounce and luminosity. bringing immediate relief from tightness and discomfort, this calming mask reduces redness, irritation and diminishes the visibility of fine lines, while the cocktail of alchemic extracts helps to strengthen skin's defenses - enhancing moisture retention and supplementing the protective barrier between skin and the everyday environmental stress. can be left on overnight.

ingredients: aqua [spring water], glycerin [veg. glycerin], rosa gallica [french rose], natri alginat [cold water seaweed], sclerotium gum [fermented mushroom], honey [white cameroon oki], rosa damascena [hybrid bulgarian rose/persian rose], jwpe® [JULISIS white pearl essence]



enzyme lifting mask, 50ml

this purely organic bio skin peel is a natural alternative to chemical peels. the enzyme lifting mask helps remove dead skin cells and frees the skin from chemical build up created by mineral oil based substances like silicones, microcrystalline waxes and paraffins. utilizing essential phytonutrients and antioxidant rich bilberry extracts the skin appears refreshed, renewed and healthy. use once per week, leave on for 10-15 minutes, remove with warm water.

ingredients: aqua [spring water], caprylic/capric triglyceride [herbal wax], glycerine [herbal glycerine], prunus amygdalus dulcis oil [sweet almond oil], glyceryl stearate [herbal wax], glyceryl stearate citrate [herbal wax], butyrospermum parkii butter [karite shea butter], vaccinium myrtillus [bilberry extract], sodium stearoyl lactylate [sodium salts], theobroma cacao seed butter [cocoa fruit butter], levulinic acid [sucrose], saccharum officinarum [sugar cane extract], xanthan gum [fermented corn], potassium sorbate [potassium salt], citrus aurantium dulcis [orange extract], citrus medica limonum [lemon extract], tocopherol [vitamin e], acer saccharum [maple extract], helianthus annuus seed oil [sunflower seed oil], sodium hydroxide [soda]



neck firm treatment, 50ml

this luxurious and wholesome treatment supports essential regeneration to the fragile neck, bust and décolletage area. the balanced compound comprised of rose extract, rose balm, hawthorn, saffron and jlpe® pearl essence is specially designed to help smooth the neck's delicate skin to achieve a youthful, firmed appearance.

use: massage with both hands in swift movements starting at the bust, moving upward toward the neck and chin. if needed apply to nape and shoulders.

ingredients: aqua [spring water], rose hydrosol [rose water], cardiaea leonurus [motherwort], hypericum perforatum [st. john's wort oil], melissa officinalis [lemon melissa], rosa centifolia [provence rose balm], rosmarinus officinalis [rosemary], crataegus monogyna [white hawthorne extract], crocus sativus [saffron], altea officinalis [marsh-mallow], lavandula augustifolia [lavender avocado oil], rosa centifolia [rose olive oil], glycerine [herbal glycerine], lecithin [soy], citrus paradisi [pink grapefruit oil], boswellia carterii [yellow incense], jlpe [JULISIS white pearl essence®]

sun emulsion, 100ml [30 uva/12uvb]



this unique organic sun emulsion protects and nourishes even the most sensitive skin immediately after application. enriched with organic botanical extracts and natural mineral sunscreen together with JULISIS liquid silver essence® hydrates skin and helps prevent skin damage and premature aging. the silky light consistency spreads evenly without leaving white residue and guarantees an even, longer lasting tan. perfectly suited for daily use on childrens' skin and users with allergic tendencies. gold elixir day and gold emulsion day may be applied before. suitable both for seaside and mountains.

ingredients: aqua [levitised water], prunus armeniaca [yellow apricot oil], methylsulfonylmethane [sulphur flower], dulcis prunis [sweet almond oil], usnea barbata ekstrakt [tree moss], tocopheryl acetate [vitamine e], ascorbyl palmitate [vitamine c], calendula officinalis [field marigold], cocos nucifera [coconut extract], glycerine [herbal glycerine], melaleuca alternifolia [tea tree extract], aloe vera 200:1 [aloe extract], retinyl palmitate [vitamine a], citrus paradisi [grapefruit kernel extract], calciol [vitamine d3], micro titanium dioxide >100µ, micro zinc dioxide >100µ, citrus sinensis [orange leaf extract], jlse [JULISIS liquid silver essence®]

salt crystal body peeling, 180g



this gentle body scrub - using unique mineral rich crystal salt from a lake 2000 meters below surface - helps to remove dead skin cells and promotes healthy circulation, leaving skin smoothed and toned.
use: apply onto moist skin in circular motion. pure cell nutrition for the most demanding skin.

ingredients: sodium chloride, potassium, zinc, sulphur, magnesium, calcium, iron, copper, chromium, vanadium

when julius first visited our medicinal plant garden in the italian alps, he immediately fell in love with this big towering horse chestnut tree that is 400-years-old - like a guardian, watching over the entire gardens. since fruits, barks, roots, flowers and leaves have different properties, he wondered if we could utilize them all together for benefiting the skin.

now, for the first time ever, we were able to compose a unique formula that combines all single parts of the tree into pearl body serum and pure body emulsion. result: cellulite firming, hydrating, rejuvenating as well as contouring your entire body.





pearl body serum, 150ml

this velvety serum immediately moisturizes, firms and regenerates. enriched with jlpe® white pearl essence and extracts of chestnut blossom, bark, fruit and leaves, these cell wall tightening, detoxifying and generally rejuvenating. the protective barrier helps to protect the skin from environmental influences and loss of moisture. pearl body serum creates an invisible cocoon of well-being and helps to keep areas such as thighs, arms, hips and waist supple while firming the contours.

ingredients: aqqua, prunus amygdalus dulcis oil (sweet levant almond oil), alcohol (organic grain), glycerin (veg), glyceryl stearate citrate, polyglyceryl-3 stearate, hydrogenated lecithin, butyrospermum parkii butter (shea butter), alpha tocopherol, algin (blue algae), aescolus hippocastanum (horse chestnut flower, bark, leaf, fruit, root, nut), calendula off., ruscus oculeatus (butcher's-broom), hedera helix (european ivy), vaccinium myrtillus (blueberry extract), solidago virgaurea (european golden rod), betula pendula (silver birch), pulmonaria off. (mountain lungwort), cananga flower extract (cananga odorata), angelica root extract (angelica archangelica), sweet orange (citrus aurantium dulcis), mentha piperita (mint leaf and root), sclerotium gum, glucose-lactobacillus-cocos nucifera fruit extract, sorbic acid, lactoperoxidase-glucose oxidase.



pure body emulsion, 150ml

this light and nourishing body emulsion is a blessing for your entire body and is intended to strengthen the skin's optimal barrier function and regulate its moisture balance. enriched with the power of chestnut (extracts from roots, fruit, bark, blossom and nut), together with ivy, thorny myrtle and blueberry, the skin surface appears refined, even and tightened. the rock crystal dorje essence activates and harmonizes all 7 chakras. very suitable for problematic skin (psoriasis, eczema, etc.).

ingredients: aqua, prunus amygdalus dulcis oil (sweet levant almond oil), alcohol (organic grain), glycerin (veg), glyceryl stearate citrate, polyglyceryl-3 stearate, hydrogenated lecithin, butyrospermum parkii butter (shea butter), alpha tocopherol, algin (blue algae), aescolus hippocastanum (horse chestnut flower, bark, leaf, fruit, root, nut), calendula off., ruscus oculeatus (butcher's-broom), hedera helix (european ivy), vaccinium myrtillus (blueberry extract) solidago virgaurea (european golden rod), betula pendula (silver birch), pulmonaria off. (mountain lungwort), cananga flower extract (cananga odorata), angelica root extract (angelica archangelica), sweet orange (citrus aurantium dulcis), mentha piperita (mint leaf and root), sclerotium gum, glucose-lactobacillus-cocos nucifera fruit extract, sorbic acid, lactoperoxidase-glucose oxidase, rock crystal dorje essence.

a true ceremonial treatment for the body
→ indulgent, restorative, and timeless

mughal body oil, 200ml

an incomparable fusion of alchemy and ayurveda, this exquisite body oil is a sensorial ritual designed to restore harmony to both skin and spirit. crafted with a masterful infusion of precious herbs and delicate flower extracts, the formula penetrates deeply to replenish dry, depleted skin, enveloping the body in lasting moisture and luminous softness.

ideal as a daily massage and body oil, it enhances circulation and promotes a feeling of total wellbeing. when added to a warm bath, it releases its aromatic essence into the water, creating a luxurious sanctuary that restores vitality and serenity from within.

a true ceremonial treatment for the body —
indulgent, restorative, and timeless.

ingredients: *buxus chinensis* (gold jojoba oil), *prunus amygdalus dulcis* (sweet almond oil), *rosa rubinigosa* (rose hip seed oil), *ocimum sanctum* (holy basil leaf extract), *rosa damascena* (damask rose), *rosmarinus officinalis* (wild verbenon rosemary), *withania somnifera* (ashwaganda root), *asparagus racemosus* (shatavari root extract), *cinnamomum zeylanicum* (cinnamon bark extract), *salvia officinalis* (golden icterina sage)





healing jojoba, the basis for our bespoke oils

jojoba oil (*simmondsia chinensis*) - jojoba is a shrub native to north america. the oil (a liquid wax) contains powerful antioxidants (tocopherols = vitamin e) and has been used as a moisturizer and healing remedy by native americans for centuries.

jojoba oil is very similar to human sebum and it has been shown to reduce uv skin damage, calms down allergies and helps to seal in moisture.

we cold press our oils in-house making them the highest quality in terms of bio availability. all the minerals and vitamins are intact as we are able to fill the bottles right after pressing. this is unmatched in the industry.

hand-crafted custom oil for *your* skin



bespoke body oil, 200ml

experience the art of truly personalized body care with our luxury bespoke organic body oil - an exceptional formulation created exclusively with utmost bioavailability to meet your individual needs.

at the heart of this composition lies our finest cold-pressed jojoba seed oil, revered for its remarkable affinity with the skin and its ability to deeply nourish without heaviness. this precious base is elevated with our signature gold jlge®, an exclusive infusion that enhances vitality, supports rejuvenation, regeneration, and imparts a subtle, radiant glow to the skin.



bespoke face oil, 50ml

indulge in a truly personal ritual of beauty and well-being with your bespoke facial oil - an exquisite formulation created exclusively for you. this is not simply skincare; it is a deeply individualized alchemical experience with the highest bioavailability.

following a private consultation with julius eulberg, founder and master alchemist, your skin's unique needs, lifestyle, and energetic balance are carefully considered. drawing from a profound knowledge of botanical medicine, he intuitively composes a harmonious blend of rare medicinal herbs, potent plant extracts, and precious flower oils - each selected for their therapeutic properties and synergistic effect.

bespoke hand oil, 50ml



our bespoke hand oil is a tailor-crafted botanical composition, individually created to meet the unique needs of your skin. through personal consultation, we determine your hand's condition — dryness, sensitivity, pigmentation, loss of elasticity — and compose a precious oil blend in harmony with you.

each formula is handcrafted for you:

- rare cold-pressed plant oils
- medicinal blossoms and herbal macerations
- precious gemstone and metal essences
- vital botanical extracts selected for regeneration and radiance

silken yet deeply nourishing, the oil absorbs effortlessly, restoring suppleness, luminosity, and refined softness without residue.

bespoke lip oil, 10ml



our bespoke lip oil is a hand-crafted botanical elixir, individually composed to restore softness, fullness, and natural luminosity. through personal consultation, we create a formula aligned with your lips' specific needs — dryness, sensitivity, fine lines, loss of definition, or environmental stress.

silken and weightless, the oil melts into the lips, delivering deep nourishment without heaviness. the texture becomes smoother, the contour more refined, and the natural color subtly enhanced.

with continued use, lips appear supple, luminous, and revitalized — as if gently infused with light.

cherish the moment



platinum night treatment 1, 2 x 5ml

specifically formulated alchemistic liquid neutralizes negative cell information caused by using synthetic cosmetics, pollution or stressful life style. platinum essence activates the intracellular oxygen system and stimulates skin's own vital functions.

this unique compound contains highly efficient light-flower essences, bulgarian rose extract and JULISIS liquid platinum essence®. on a physical level it acts as a powerful antioxidant– on a subtle energetic level it helps realign energy streams within your body. the result is a stabilized, healthy and fresh looking skin. softly roll with the applicator over face, neck and forehead. for maximum benefit concentrate on areas prone to form lines and wrinkles. the roll-on also stimulates the lymphatic system. use every three months only for one week every night. shake before use. during this intense treatment period refrain from using any other products. choose according to your preferred fragrance.

ingredients: aqua [glacier water], buxus chinensis [gold jojoba oil], rosa canina [rose hip oil], viola herba [wild pansy], alchemilla vulgaris herba [lady's mantle], paeonia officina flos [crimson red peony], matricaria camomilla flos [camomille flowers], alcohol [bio grain alcohol], glycerine [herbal glycerine], natrii alginas [algae extract], rosa gallica [bulgarian rose], jlpe [JULISIS liquid platinum essence®]

night treatment with
activated platinum
→ neutralizes signs of
premature aging



JULISIS starter kits

JULISIS travel size sets, great for using to pack your favorite JULISIS products, are durable safe containers which can be refilled. these bags are the ideal size as a starter kit for JULISIS system, for a weekend getaway, and will hold additional items. perfect gifts for any occasion.

the **gold starter kit day** includes a 15ml gold wash day, gold neroli toner and gold emulsion day as well as a 7ml eyemulsion.

our **silver starter kit night** includes 15ml silver night wash, silver cistus toner and silver cream night as well as a 7ml silver mineral mask.



AM/PM prayer

... may we be united
in our hearts,
may we be united
in our thoughts,
may we be united
in our resolve,
may we be united
in our understanding,
and may there be
perfect unity
amongst us...

(RIG VEDA)

wisdom
allow harmony
oneness TRUST SOUL
HEALING GRACE purpose
transcend PEACE create
LOVE UNCONDITIONAL
AWARENESS all that is NOW
MINDFULNESS
JOY compassion FLOW
GRATITUDE heart
enlightenment blessings
MEDITATE BALANCE
guidance ASK energy
INTENTION
LET GO





JULISIS

holistic preparations
homeopathic ingredients
biodynamically cultivated plants
medicinal herbs
pure cell nutrition

free of false promises

mineral oil products [silicone (dimethicone), paraffin, microcrystalline waxes],
lauryl sulfate, synthetic preservatives [ethyl, -propyl, -butyl, -methylparaben],
triethanolamine [TEA], synthetic perfumes, glycols: PEG, polyethylene glycol,
pentylene glycol, propylene glycol, and dyes

we love animals. only tested with humans.
nature. pure. 100%

For further information and latest news please sign up to the inner circle
JULISIS.com and on instagram @julisis skincare